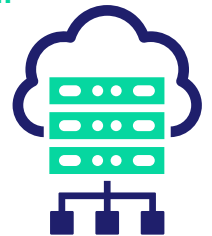


ARE YOU HESITATING TO MIGRATE TO HOPEM IMMOBILIER?

**Have all the information required
for your reflection on hand.**

Being hosted in the Cloud means taking advantage of many benefits and freeing you from daily IT management:

- Use the operating system of your choice (Mac, Windows, or Linux),
- No local installation required,
- We handle updates, out of business hours and on 24-48h notice.



Compare the fees of your IT service provider and you will see that this is worth the investment:

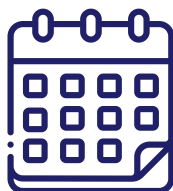
- A one-time fee for migrating from the current server to Hopem hosting service.
- Monthly access right fees to the Hopem Immobilier (per user).

What is the timeframe for migration?

Between 5 to 10 working days following the signing of the proposal. Expect a few hours of downtime for the migration. Afterward, your teams will access Hopem through a web browser.







Some adjustments will be needed for document management. We provide all the necessary documentation to support these changes.

Characteristics of our Hosted Solution:



Availability
99%
24/7
365 days/year

Daily external backup
with retention
of 30 days.

Elements	“Physical” hosting	 « Cloud » hosting
Data location	On your servers or your provider's server	On our fully secure servers
Responsible for making backups	The customer	
Responsible for installing updates	The customer	
Type of remote connection possible	Through a secure virtual private network (VPN)	Through any web browser
Software availability	Customer's responsibility	99.9% of the time - 24/7
Initial costs	Deployment costs	Deployment costs
Recurring fees	Monthly fees	Monthly fees including hosting
Recommended work environment	Microsoft Windows	Microsoft Windows, Mac OS, or Linux
Data security provided by Hopem		
Infrastructure investment costs		
Energy cost		
Updates	Manual updates with each new release	Automated updates
Operation System	Works on Windows only	Works on Mac and Windows
Remote Work		



FOR THE TECHNICIANS:

Hosting Specifications

- Soc2 Type2 and IS027001 Certifications
- Secure entry by biometrics and access code
- Security guards on site 24/7
- Located in Quebec and separated by 260 kilometres

Hosting Architecture

- Fully redundant infrastructure
- N+I Process Capacity for Virtualization Access Farm
- Enterprise grade SSD storage system
- Technical management team specializing in cloud hosting and resilience



Find the main questions asked by our clients and [their answers by clicking here!](#)